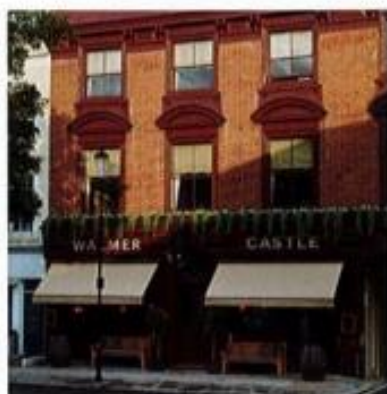




### FABULOUS AT 50

The concept behind every Martin Moore kitchen collection for the past 50 years has been timeless furniture blended with classic good looks and contemporary practicalities. When managing and creative director Richard Moore designed the company's new 'Legacy' collection to mark its golden anniversary, his goal was to create a range that honoured both heritage and innovation. Hand-crafted from oak in a pale washed finish, the elegant linear design is teamed with luxurious materials.

[martinmoore.com](http://martinmoore.com)



### LONDON LANDMARK

The Walmer Castle pub, on Ledbury Road in Notting Hill, is a traditional pub with a wonderfully warm, welcoming atmosphere, delicious food and exceptional hospitality. Run by Jack Greenall, proprietor of much-loved The Surprise in Chelsea, the interiors were recently updated by designer Isabella Worsley, creating a refined yet relaxed space featuring striking art and historic references to the local area. Enjoy a casual supper with friends, bag an outside bench or book one of the private rooms for a special celebration.

[walmercastle-nottinghill.co.uk](http://walmercastle-nottinghill.co.uk)

## HOUSE & GARDEN

JULY 2025



### FROM THE PUBLISHER

There is always much to celebrate with the start of an English summer and the wonderful events that it brings. Kitchen specialist Martin Moore has its own festivities planned, with the launch of a collection to mark the company's 50th anniversary. Over at Wren Kitchens, its new grooved cabinetry will provide a chic upgrade for a tired kitchen. If you're looking for an enjoyable way to spend an afternoon, Gusbourne offers wine-tasting in the Kent countryside, or pay a visit to Treasure House Fair in the grounds of London's Royal Hospital Chelsea. And why not end the day with a cold, refreshing drink at the Walmer Castle pub in Notting Hill – just what summer evenings were made for!

*Emma Redmayne*

EMMA REDMAYNE  
HEAD OF INDUSTRY, HOME



### RAISE A GLASS

Leading English sparkling and wine producer, Gusbourne has created its Nest Selection, for members and guests of its cellar-door experience in Appledore, Kent. This is a memorable day out, with the chance to try exquisite wines in its specially designed space, The Nest. There are year-round wine tastings, vineyard tours, masterclasses, picnics, as well as its Chef Series.

[gusbourne.com](http://gusbourne.com)



### TREASURE TROVE

Returning to the Royal Hospital Chelsea from June 26 to July 1, the Treasure House Fair blends all that is uniquely British with hand-picked treasures from around the world. The event will bring together 70 internationally renowned exhibitors showcasing furniture, fine art, antiques, jewellery and classic cars. Vetted by independent specialists, the carefully curated works will take the visitor on a journey through centuries of craftsmanship, spanning every continent and demonstrating a range of artistic talent rarely seen under one roof.

[treasurehousefair.com](http://treasurehousefair.com)



### COOL AND COLLECTED

The new 'Athena' range from Wren Kitchens blends the Japanese and Scandinavian styles. The grooved cabinetry design offers a sleek look, ideal for those hoping to add a modern, calm aesthetic to their home. This range comes in 150 different cabinet styles, with a variety of shades and finishes to choose from, ensuring that each kitchen is bespoke to the homeowner.

[wrenkitchens.com](http://wrenkitchens.com)